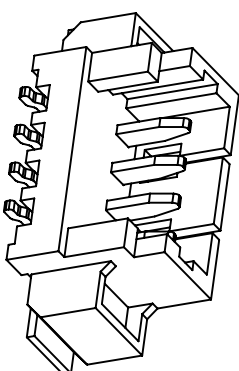
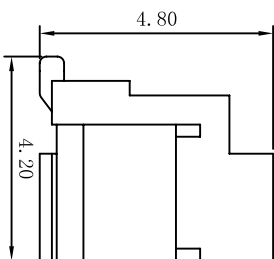
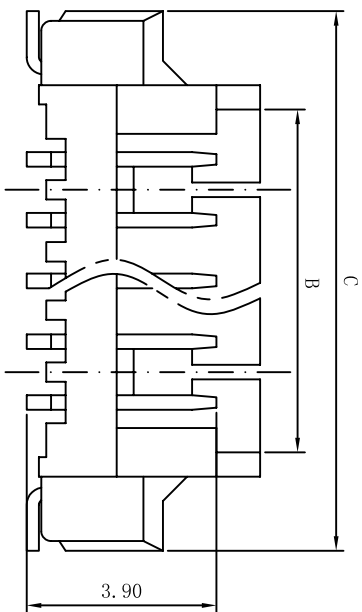


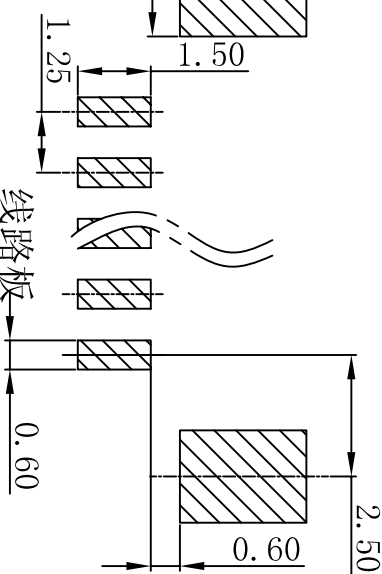
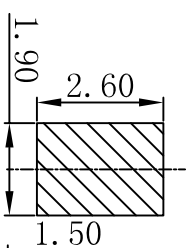
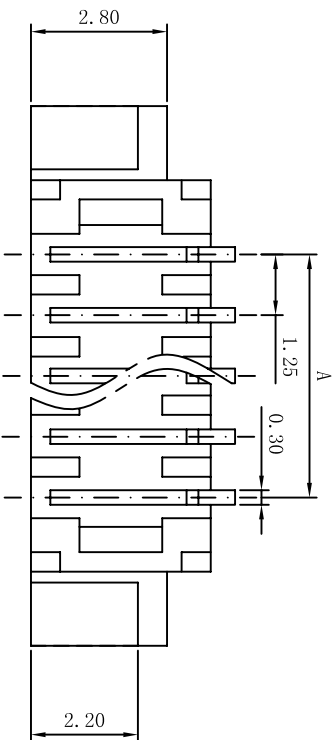
PITCH 1.25mm BAR CONNECTORS



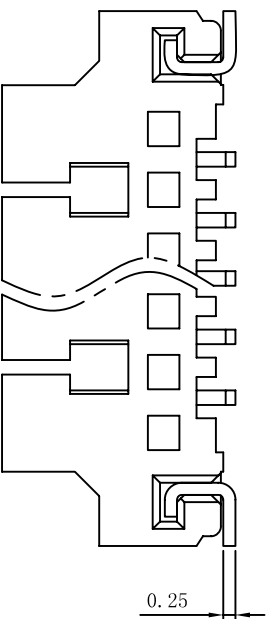
性能:

- 额定电流: 1A
- 额定电压: 100V
- 耐压: 500V
- 接触电阻: $\leq 20m\Omega$
- 绝缘电阻: 500M Ω
- 工作温度: $-20^{\circ}C \sim +85^{\circ}C$

塑件 (材质): LCP, UL94V-0
 插簧 (材质): 磷青铜, 镀锡/镀金
 焊片 (材质): 磷青铜, 镀锡/镀金



P.C.B Layout



孔位	A	B	C
2	1.25	3.10	7.35
3	2.50	4.35	8.60
4	3.75	5.60	9.85
5	5.00	6.85	11.10
6	6.25	8.10	12.35
7	7.50	9.35	13.60
8	8.75	10.60	14.85
9	10.00	11.85	16.10
10	11.25	13.10	17.35
11	12.50	14.35	18.60
12	13.75	15.60	19.85
13	15.00	16.85	21.10
14	16.25	18.10	22.35
15	17.50	19.35	23.60
16	18.75	20.60	24.85
17	20.00	21.85	26.10
18	21.25	23.10	27.35
19	22.50	24.35	28.60
20	23.75	25.60	29.85

X ± 0.3	X° ± 5°	UNITS
.X ± 0.25	.X° ± 2°	mm
.XX ± 0.20	.XX° ± 1°	MAT'L
.XXX ± 0.10	.XXX° ± 0.5°	FINISH
Q'TY		

NAME (INTENDED USE)	1.25mm (C型) 条形连接器立贴式
PART NO. (INTENDED USE)	1.25-C-1PB
APDR:	
CHKD:	
DRE:	YLZ 2011.09.28

mstconn
 SHEN ZHEN DE RUI ELECTRONIC CO., LTD

TITLE: 1.25mm (C型) 条形连接器立贴式

DWG NO.: 125N05-CUB0000000

SCALE: 1/1

SHEET: 1/1

REV.:

